



SunLong Biotech Co.,LTD
Tel: 0086-571- 56623320 Fax:0086-571- 56623318
E-mail:sales@sunlongbiotech.com
www.sunlongbiotech.com

Sunlong Medical™ Human IL-6 High Sensitivity ELISA Kit

Catalog Number: HS-EL0277Hu

Size: 48 Test, 96 Test

Storage: 2-8°C

Validity Period: Two Years

Sensitivity:0.02 pg/mL

Assay range:0.31 pg/mL - 20 pg/mL

For the **quantitative determination** of Human IL-6 concentrations in **cell culture supernates, serum and plasma**.

This package insert must be read entirely before using this product. For proper performance, follow the protocol provided with each individual kit.

TABLE OF CONTENTS

ASSAY PROCEDURE SUMMARY	1
-------------------------------	---

Introduction

Description	2
Principle of the Assay	2
Limitations of the Procedure	2

General Information

Materials Provided	3
Storage	3
Other Supplies Required	4
Precaution	4
Technical Hints	5

Assay Protocol

Sample Collection and Storage	5
Reagent Preparation	6, 7
Assay Procedure	7, 8

Analysis

Calculation of Results	8
Typical Data	8, 9
Sensitivity	9
Precision	9
Recovery	9
Linearity	10
Calibration	10
Sample Values	10
Specificity	11

ASSAY PROCEDURE SUMMARY

1. Prepare all reagents and standards as directed. Add 300 μ l Washing Buffer (1 \times) per well to soak for about 30 seconds. Use immediately after aspirate.



2. Add 100 μ l 2-fold diluted Standard to Standard well. Add 100 μ l *Standard Diluent/culture medium* to Blank well.



3. Serum/Plasma: Add 80 μ l *Assay Buffer* (1 \times) and 20 μ l sample to the sample well. Cell culture Supernates: Add 100 μ l cell culture supernates to the sample well.



4. Add 50 μ l of diluted *Detect Antibody* to each well. Step 2, 3 and 4 should be completed within 15 minutes. Incubate for 1.5 hours at RT. Aspirate and wash 6 times.



5. Add 100 μ l of diluted *Streptavidin-HRP* to each well. Incubate for 30 minutes at RT. Aspirate and wash 6 times.



6. Add 100 μ l diluted Amplification Reagent to each well. Incubate for exactly 15 minutes at RT. Aspirate and wash 6 times.



7. Add 100 μ l diluted Streptavidin-HRP to each well. Incubate for exactly 15 minutes at RT. Aspirate and wash 6 times.



8. Add 100 μ l *Substrate Solution* to each well. Incubate for 5 - 30 minutes at RT. Protect from light.



9. Add 100 μ l *Stop Solution* to each well.



10. Read at 450 nm within 30 minutes. Correction 570 or 630 nm.

DESCRIPTION

Interleukin 6 (IL-6) is an interleukin that acts as both a pro-inflammatory cytokine and an anti-inflammatory myokine. In humans, it is encoded by the *IL-6* gene. IL-6 is secreted by T cells and macrophages to stimulate immune response, e.g. during infection and after trauma, especially burns or other tissue damage leading to inflammation. IL-6 also plays a role in fighting infection, as IL-6 has been shown in mice to be required for resistance against bacterium *Streptococcus pneumoniae*.

IL-6 stimulates the inflammatory and auto-immune processes in many diseases such as diabetes, atherosclerosis, depression, Alzheimer's Disease, systemic lupus erythematosus, multiple myeloma, prostate cancer, Behçet's disease, and rheumatoid arthritis. Advanced/ metastatic cancer patients have higher levels of IL-6 in their blood.

PRINCIPLE OF THE ASSAY

Human IL-6 High Sensitivity ELISA Kit is based on the quantitative sandwich enzyme-linked immunosorbent assay technique to measure concentration of human IL-6 in the samples. A monoclonal antibody specific for human IL-6 has been pre-coated onto a microplate. Standard, samples and biotin-linked detect antibody specific for IL-6 are pipetted into the wells and IL-6 present is bound by the immobilized antibody and detect antibody following incubation. After washing away any unbound substances, Streptavidin-HRP is added. After washing, amplification reagent is added to the wells. Following incubation any unbound substances is removed during a wash step and streptavidin-HRP is added. After washing, substrate solution is added to the wells and color develops in proportion to the amount of IL-6 bound in the initial step. The color development is stopped and the intensity of the color is measured.

LIMITATIONS OF THE PROCEDURE

- ⌚ FOR RESEARCH USE ONLY. NOT FOR USE IN DIAGNOSTIC PROCEDURES.
- ⌚ Do not use expired kit or reagents.
- ⌚ Do not use reagents from other lots or manufacturers. Do not prepare component by yourself.
- ⌚ If concentration of assayed factor in samples is higher than the highest standard, dilute the serum/plasma samples with *Assay Buffer*, dilute the cell culture supernate samples with *cell culture medium*. Reanalyze these and multiply results by the appropriate dilution factor.
- ⌚ Any variation in testing personnel, sample preparation, standard dilution, pipetting technique, washing techniques, incubation time, temperature, kit age and equipment can cause variation in results.
- ⌚ This assay is designed to eliminate interference by factors present in biological samples. Until all factors have been tested in the ELISA immunoassay, the possibility of interference cannot be excluded.

MATERIALS PROVIDED (96 Test)

Unopened kit should be stored at 2 - 8 °C.



- ⊕ **Human IL-6 HS Microplate** (1 plate): 96-well polystyrene microplate (12 strips of 8 wells) coated with a monoclonal antibody against human IL-6.
- ⊕ **Human IL-6 HS Standard** (2 vials): Recombinant human IL-6 in a buffered protein base with preservatives; lyophilized.
- ⊕ **Human IL-6 HS Detect Antibody** (1 vial): Biotin-conjugate anti-human IL-6 detect antibody; 100× liquid.
- ⊕ **Standard Diluent** (1 bottle, 5 ml): In some, very rare cases, an insoluble precipitate of stabilizing protein has been seen in the Standard Diluent. This precipitate does not interfere in any way with the performance of the test and can thus be ignored.
- ⊕ **Streptavidin-HRP** (2 vials): 100× liquid.
- ⊕ **Amplification Reagent** (1 vial).
- ⊕ **Amplification Reagent Diluent** (12 mL).
- ⊕ **Assay Buffer (10×)** (1 bottle, 5 ml): PBS with 0.5 % Tween-20 and 5 % BSA.
- ⊕ **Substrate** (1 bottle, 11 ml): TMB (tetramethyl-benzidine).
- ⊕ **Stop Solution** (1 bottle, 11 ml): 0.18 M sulfuric acid.
- ⊕ **Washing Buffer (20×)** (1 bottle, 50 ml): PBS with 1 % Tween-20.
- ⊕ **Plate Covers** (10 strips).

STORAGE

Store kit reagents between 2 and 8 °C . Immediately after use remaining reagents should be returned to cold storage (2 to 8°C). Expiry of the kit and reagents is stated on labels. Expiration date of the kit components can only be guaranteed if the components are stored properly, and if, in case of repeated use of one component, this reagent is not contaminated by the first handling.

Unopened kit		Store at 2 - 8 °C (See expiration date on the label).
Opened/ Reconstituted Reagents	1× Washing Buffer 1× Assay Buffer Stop Solution Standard Diluent Substrate TMB Detect Antibody Streptavidin-HRP	Up to 1 month at 2 - 8 °C.
	Standard	Up to 1 month at ≤ -20 °C in a manual defrost freezer. Discard after use.
	Microplate Wells	Up to 1 month at 2 - 8 °C. Return unused strips to the foil pouch containing the desiccant pack, reseal along entire edge to maintain plate integrity.

Provided this is within the expiration date of the kit.

OTHER SUPPLIES REQUIRED

- ④ **Microplate reader** capable of measuring absorbance at 450 nm, with correction wavelength set at 570 nm or 630 nm.
- ④ **Pipettes and pipette tips.**
- ④ 50 µl to 300 µl adjustable **multichannel micropipette** with disposable tips.
- ④ Multichannel micropipette **reservoir**.
- ④ **Beakers, flasks, cylinders** necessary for preparation of reagents.
- ④ **Deionized or distilled water.**
- ④ **Polypropylene** test tubes for dilution.

PRECAUTION

- ④ All chemicals should be considered as potentially hazardous.
- ④ We therefore recommend that this product is handled only by those persons who have been trained in laboratory techniques and that it is used in accordance with the principles of good laboratory practice. Wear suitable protective clothing such as laboratory overalls, safety glasses and gloves.
- ④ Care should be taken to avoid contact with skin or eyes. In the case of contact with skin or eyes wash immediately with water. See material safety data sheet(s) and/or safety statement(s) for specific advice.
- ④ The Stop Solution provided with this kit is an acid solution. Wear eyes, hand, face, and clothing protection when using this material.
- ④ Reagents are intended for research use only and are not for use in diagnostic or therapeutic procedures.
- ④ Do not mix or substitute reagents with those from other lots or other sources.
- ④ Do not use kit reagents beyond expiration date on label.
- ④ Do not expose kit reagents to strong light during storage and incubation.
- ④ Do not eat or smoke in areas where kit reagents or samples are handled.
- ④ Avoid contact of skin or mucous membranes with kit reagents or specimens.
- ④ Rubber or disposable latex gloves should be worn while handling kit reagents or specimens.
- ④ Avoid contact of substrate solution with oxidizing agents and metal.
- ④ Avoid splashing or generation of aerosols.
- ④ In order to avoid microbial contamination or cross- contamination of reagents or specimens which may invalidate the test use disposable pipette tips and/or pipettes.
- ④ Use clean, dedicated reagent trays for dispensing the conjugate and substrate reagent.
- ④ Exposure to acid inactivates the HRP and antibody conjugate.
- ④ Glass-distilled water or deionized water must be used for reagent preparation.
- ④ Substrate solution must be warmed to room temperature prior to use.
- ④ Decontaminate and dispose specimens and all potentially contaminated materials as they could contain infectious agents. The preferred method of decontamination is autoclaving for a minimum of 1 hour at 121.5 °C.
- ④ Liquid wastes not containing acid and neutralized waste may be mixed with sodium hypochlorite in volumes such that the final mixture contains 1.0 % sodium hypochlorite. Allow 30 minutes for effective decontamination. Liquid waste containing acid must be neutralized prior to the addition of sodium hypochlorite.
- ④ In some cases, an insoluble precipitate of stabilizing protein has been seen in the Standard Diluent. This precipitate does not interfere in any way with the performance of the test and can thus be ignored. Or remove precipitate by centrifuging at 6,000 × g for 5 minutes.

TECHNICAL HINTS

- ⌚ When mixing or reconstituting protein solutions, always avoid foaming.
- ⌚ To avoid cross-contamination, change pipette tips between additions of each standard level, between sample additions, and between reagent additions. Also, use separate reservoirs for each reagent.
- ⌚ When using an automated plate washer, adding a 30 seconds soak period before washing step and/or rotating the plate between wash steps may improve assay precision.
- ⌚ To ensure accurate results, proper adhesion of plate sealers during incubation steps is necessary.
- ⌚ Substrate Solution should remain colorless until added to the plate. Keep Substrate Solution protected from light. Substrate Solution should change from colorless to gradations of blue.
- ⌚ Stop Solution should be added to the plate in the same order as the Substrate Solution.
- ⌚ The color developed in the wells will turn from blue to yellow upon addition of the Stop Solution. Wells that are green in color indicate that the Stop Solution has not mixed thoroughly with the Substrate Solution.
- ⌚ It is recommended that all samples and standards be assayed in duplicate.
- ⌚ Take care not to scratch the inner surface of the microwells.

SAMPLE COLLECTION AND STORAGE

Cell Culture Supernates – Remove particulates by centrifugation at $300 \times g$ for 10 minutes and assay immediately or aliquot and store samples at $\leq -20^{\circ}\text{C}$.

Serum – Use a serum separator tube (SST) and allow samples to clot for 30 minutes before centrifugation for 10 minutes at $1,000 \times g$. Remove serum and assay immediately or aliquot and store samples at $\leq -20^{\circ}\text{C}$.

Plasma – Collect plasma using EDTA, citrate or heparin as anticoagulant. Centrifuge at $1,000 \times g$ within 30 minutes of collection. Assay immediately or aliquot and store samples at $\leq -20^{\circ}\text{C}$.

Other biological samples might be suitable for use in the assay. Cell culture supernates, serum and plasma were tested with this assay.

Note: Samples containing a visible precipitate must be clarified prior to use in the assay. Do not use grossly hemolyzed or lipemic specimens.

If samples are to be run within 24 hours, they may be stored at 2 to 8°C . For longer storage, aliquot samples and store frozen at -20°C to avoid loss of bioactive human IL-6. Avoid repeated freeze-thaw cycles.

REAGENT PREPARATION

Bring all reagents and samples to room temperature before use.

If crystals form in the Buffer Concentrates, warm and gently stir them until completely dissolved.

Washing Buffer (1×)

Pour entire contents (50 ml) of the **Washing Buffer (20×)** into a clean 1,000 ml graduated cylinder. Bring to final volume of 1,000 ml with pure or deionized water.

Mix gently to avoid foaming.

Transfer to a clean wash bottle and store at 2 to 25°C. Washing Buffer (1×) is stable for 30 days.

Assay Buffer (1×)

Pour the entire contents (5 ml) of the **Assay Buffer (10×)** into a clean 100 ml graduated cylinder.

Bring to final volume of 50 ml with distilled water. Mix gently to avoid foaming.

Store at 2 to 8°C. Assay Buffer (1×) is stable for 30 days.

Detect Antibody

Mix well prior to making dilutions.

Make a **1: 100** dilution of the concentrated **Detect Antibody** solution with Assay Buffer (1×) in a clean plastic tube as needed.

The diluted Detect Antibody should be used within 30 minutes after dilution.

Streptavidin-HRP

Mix well prior to making dilutions.

Make a **1: 100** dilution of the concentrated **Streptavidin-HRP** solution with Assay Buffer (1×) in a clean plastic tube as needed.

The diluted Streptavidin-HRP should be used within 30 minutes after dilution.

Amplification Reagent

Mix well prior to making dilutions.

Make a **1: 100** dilution of the concentrated **Amplification Reagent** solution with Amplification Reagent Diluent in a clean plastic tube as needed.

The diluted Amplification Reagent should be used within 30 minutes after dilution.

Sample Dilution

If your samples have high IL-6 content, dilute serum/plasma samples with Assay Buffer (1×). For cell culture supernates, dilute with cell culture medium.

Human IL-6 Standard

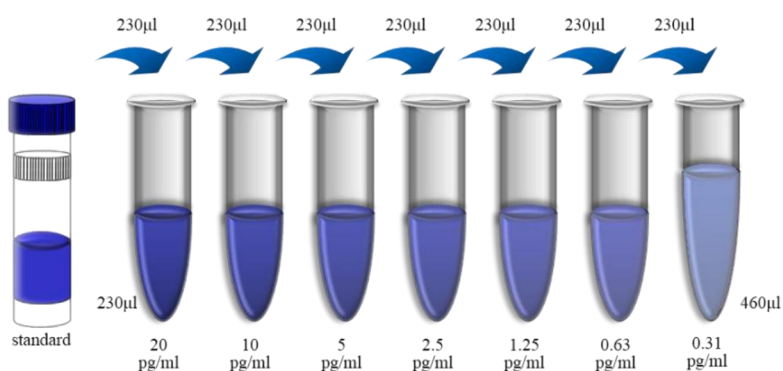
Reconstitute **Human IL-6 Standard** by addition of distilled water. Reconstitution volume is stated on the label of the standard vial. Swirl or mix gently to insure complete and homogeneous solubilization (concentration of reconstituted standard = 40 pg/ml).

Allow the standard to reconstitute for 10 - 30 minutes. Mix well prior to making dilutions.

Use polypropylene tubes.

For serum/plasma samples, mixing *concentrated human IL-6 standard* (230 μ l) with 230 μ l of *Standard Diluent* creates the high standard (20 pg/ml). Pipette 230 μ l of *Standard Diluent* into each tube. Use the high standard to produce a 1:1 dilution series (scheme below). Mix each tube thoroughly before the next transfer. *Standard Diluent* serves as the zero standard (0 pg/ml).

For cell culture supernates, mixing *concentrated human IL-6 standard* (230 μ l) with 230 μ l of cell culture medium creates the high standard (20 pg/ml). Pipette 230 μ l of cell culture medium into each tube. Use the high standard to produce a 1:1 dilution series. Mix each tube thoroughly before the next transfer. Cell culture medium serves as the zero standard (0 pg/ml).



ASSAY PROCEDURE

Bring all reagents and samples to room temperature before use.

1. Prepare all reagents including microplate, samples, standards and working solution as described in the previous sections.
2. Remove excess microplate strips and return them to the foil pouch containing the desiccant pack, and reseal for further use.
3. Add 300 μ l *Washing Buffer* (1 \times) per well, and allow it for about 30 seconds before aspiration. Soaking is highly recommended to obtain a good test performance. Empty wells and tap microwell strips on absorbent pad or paper towel to remove excess *Washing Buffer* (1 \times). Use the microwell strips immediately after washing. Do not allow wells to dry.
4. Add 100 μ l 2-fold diluted Standard to Standard well. Add 100 μ l Standard Diluent / culture medium to Blank well.
5. Serum/Plasma: Add 80 μ l Assay Buffer (1 \times) and 20 μ l sample to the sample well. Cell culture supernates: Add 100 μ l cell culture supernates to the sample well.
6. Add 50 μ l of diluted Detect Antibody to each well. Ensure reagent addition in step 4, 5 and 6 is uninterrupted and completed within 15 minutes.
7. Cover with a new adhesive strip. Incubate at room temperature (18 to 25 $^{\circ}$ C) for 1.5 hours on a microplate shaker set at 300 rpm.
8. Aspirate each well and wash, repeating the process five times for a total six washes. Wash by filling each well with 300 μ l *Washing Buffer* (1 \times). Complete removal of liquid at each step is essential to good performance. After the last wash, remove any remaining Wash Buffer by aspirating or decanting. Invert the plate and blot it against clean paper towels.

9. Repeat aspiration/wash as in step 8.
10. Add 100 μ l of diluted Streptavidin-HRP to each well. Cover with a new adhesive strip. Incubate at room temperature (18 to 25 $^{\circ}$ C) for 30 minutes on a microplate shaker set at 300 rpm.
11. Repeat aspiration/wash as in step 8.
12. Add 100 μ l of diluted Amplification Reagent to each well. Cover with a new adhesive strip. Incubate at room temperature (18 to 25 $^{\circ}$ C) for exactly 15 minutes on a microplate shaker set at 300 rpm.
13. Repeat aspiration/wash as in step 8.
14. Add 100 μ l of diluted Streptavidin-HRP to each well. Cover with a new adhesive strip. Incubate at room temperature (18 to 25 $^{\circ}$ C) for exactly 15 minutes on a microplate shaker set at 300 rpm.
15. Repeat aspiration/wash as in step 8.
16. Add 100 μ l of Substrate Solution to each well. Incubate for 5 - 30 minutes at room temperature. Protect from light.
17. Add 100 μ l of Stop Solution to each well. The color will turn yellow. If the color in the well is green or if the color change does not appear uniform, gently tap the plate to ensure thorough mixing.
18. Measure the optical density value within 30 minutes by microplate reader set to 450 nm. If wavelength correction is available, set to 570 nm or 630 nm. If wavelength correction is not available, subtract readings at 570 nm or 630 nm from the readings at 450 nm. This subtraction will correct for optical imperfections in the plate. Reading directly at 450 nm without correction may generate higher concentration than true value.

CALCULATION OF RESULTS

Average the duplicate optical density readings for each standards and sample, then subtract the average optical density value of the zero standard.

Standard Concentration as horizontal axis, optical density (OD) Value as the vertical axis, regressing the data and create a standard curve using computer software. The data may be linearized by plotting the log of the IL-6 concentrations versus the log of the OD and the best fit line can be determined by regression analysis. This procedure will produce an adequate but less precise fit of the data.

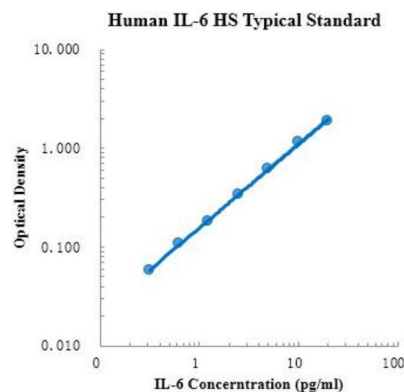
Note: The finally concentration of top standard is 20 pg/ml.

If samples have been diluted following the instruction, the final dilution factor is 5. If sample have been diluted by other means, the concentration read from the standard curve must be multiplied by the appropriate dilution factor.

TYPICAL DATA

A standard curve must be run within each assay. This standard curve is provided for demonstration only.

pg/ml	O.D.		Average	Corrected
0.00	0.090	0.086	0.088	
0.31	0.147	0.145	0.146	0.058
0.63	0.196	0.195	0.196	0.108
1.25	0.260	0.276	0.268	0.180
2.50	0.420	0.435	0.428	0.340
5.00	0.666	0.759	0.713	0.625
10.00	1.163	1.314	1.239	1.151
20.00	1.936	2.052	1.994	1.906



SENSITIVITY

The minimum detectable dose (MDD) of IL-6 is typically about 0.02 pg/ml (mean of 6 independent assays).

The MDD was determined by adding two standard deviations to the mean optical density value of ten zero standard replicates and calculating the corresponding concentration.

PRECISION

Intra-assay Precision (Precision within an assay)

Three serum-based and buffer-based samples of known concentration were tested twenty times on one plate to assess intra-assay precision.

Inter-assay Precision (Precision between assays)

Three serum-based and buffer-based samples of known concentration were tested in six separate assays to assess inter-assay precision.

	Intra-assay precision			Inter-assay precision		
	1	2	3	1	2	3
Sample						
n	20	20	20	6	6	6
Mean (pg/ml)	0.72	2.25	9.28	0.90	2.61	9.51
Standard deviation	0.04	0.11	0.44	0.06	0.12	0.54
CV (%)	5.6	4.9	4.7	6.7	4.6	5.7

RECOVERY

The spike recovery was evaluated by spiking 3 levels of human IL-6 into five health human serum

samples. The un-spiked serum was used as blank in these experiments.
The recovery ranged from 74 % to 119 % with an overall mean recovery of 94 %.

LINEARITY

To assess the linearity of the assay, five samples were spiked with high concentration of IL-6 in human serum and diluted with Standard Diluent to produce samples with values within the dynamic range of the assay.

	Average (%)	Range (%)
1:2	104	96 - 109
1:4	110	100 - 116
1:8	108	94 - 118
1:16	116	109 - 120

This immunoassay is calibrated against a highly purified CHO-expressed recombinant human IL-6. The NIBSC/WHO British Standard for human IL-6 (89/548) was evaluated in this kit in Jun 2014. To convert sample values obtained with the Human IL-6 ELISA Kit to relative approximate NIBSC units, use the equation below: NIBSC/WHO (89/548) approximate value (U/ml) = 0.100 × MultiSciences Human IL-6 value (pg/ml).

CALIBRATION

This immunoassay is calibrated against a highly purified recombinant human IL-6 (89/548) produced at MultiSciences. The latter was calibrated by the UK National Institute for Biological Standards and Inspection/World Health Organization in June 2014. Calibration results are as follows:

$$\text{NIBSC/WHO (89/548) approximate value (U/ml)} = 0.100 \times \text{Sunlong Medical}^{\text{TM}} \text{ Human}$$

SAMPLE VALUES

Serum/Plasma - Thirty samples from apparently healthy volunteers were evaluated for the presence of IL-6 in this assay. No medical histories were available for the donors used in this study.

Sample Matrix	Number of Samples Evaluated	Range (pg/ml)	Detectable (%)	Mean of Detectable (pg/ml)
Serum	30	4.3 - 93.7	100	27.0

Note: The sample range is non-physiological range. The sample range of healthy human will difference according to species, sample preparation, and testing personnel, equipment varies. The above information is only reference.

SPECIFICITY

This kit could assay both natural and recombinant human IL-6. A panel of substances listed below were prepared at 1 ng/ml in Standard Diluent to determine cross-reactivity. Preparations of the following substances at 1 ng/ml in a mid-range rhIL-6 control to determine interference. No significant cross-reactivity or interference was observed.

Human		Mouse	Rat
IFN- γ	IL-18	IFN- γ	IFN- γ
IL-1 β	IL-21	IL-1 β	IL-1 β
IL-2	IL-22	IL-2	IL-2
IL-4	IL-23	IL-4	IL-4
IL-5	MCP-1	IL-6	IL-6
IL-8	TGF- β 1	IL-10	IL-10
IL-10	TNF- α	IL-17A	IL-17A
IL-12	VEGF	TNF- α	TNF- α
IL-17A			

